

**ENGLISH**

**2025/2026**

CE



ELECTRAPLAN  
**E-SOLAR**

**GROUND AND FLAT ROOF  
MOUNTING SYSTEMS, CARPORTS**



# /CONTENTS

---





04	<b>INTRODUCTION</b>
08	<b>ENGINEERING, DEVELOPMENT</b>
10	<b>PRODUCTION</b>
12	<b>EPLAN SOLAR SRL. ROMANIA</b>
14	<b>GROUND MOUNTING SYSTEMS</b>
16	ECO
18	GRANDE
20	QUATTRO
22	ECO E-W 3-PILED
24	REFERENCES
30	<b>CARPORTS</b>
32	E-SOLAR FCP/BCP
34	E-SOLAR-ON-SIDE-O/C-CP
36	E-SOLAR-KTA-EW-CP
38	E-SOLAR-KTA-S-CP
40	REFERENCES
42	<b>FLAT ROOF MOUNTING SYSTEMS</b>
44	E-SOLAR EASYFLAT-S
46	E-SOLAR EASYFLAT-E-W
48	REFERENCES
50	<b>MECHANICAL INSTALLATION</b>
51	<b>CERTIFICATES</b>

# /INTRODUCTION



## ***Innovation and Quality Since 1994***

ELECTRAPLAN has been present in the trade and manufacturing of electrical installation materials for over 30 years. Of our four locations, three – in Vésztő, Nyírad, and Óhíd – are dedicated to production, while our headquarters is located in Érd, in the vicinity of Budapest.

Our main profile is metalworking, during which we apply innovative, custom solutions. We carry out our manufacturing with modern technology, including CNC laser cutting, profiling, and edge-bending machines, ensuring precision and high quality.

## ***E-SOLAR***

### ***For a Sustainable Future***

In 2012, we began developing and manufacturing solar mounting structures as a steel industry company, and by 2014, we were among the first to enter the market in Hungary. Since then, we have delivered mounting structures for solar projects exceeding **850 MWp** and have actively participated in numerous installations.

**Reliability, innovation, sustainability – that's E-SOLAR!**

**Our products comply with the DIN EN 1090 standard,** ensuring international quality and reliability.





# /INTRODUCTION



Headquarter in Érd



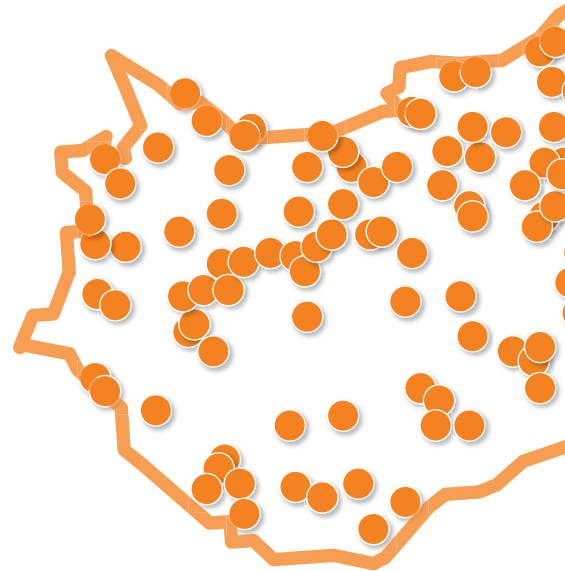
Production in Vésztő

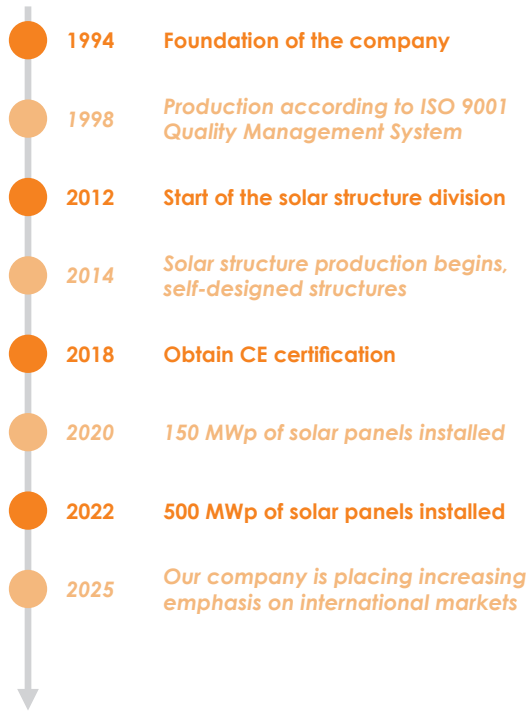


Production in Nyírad



Production in Óhíd

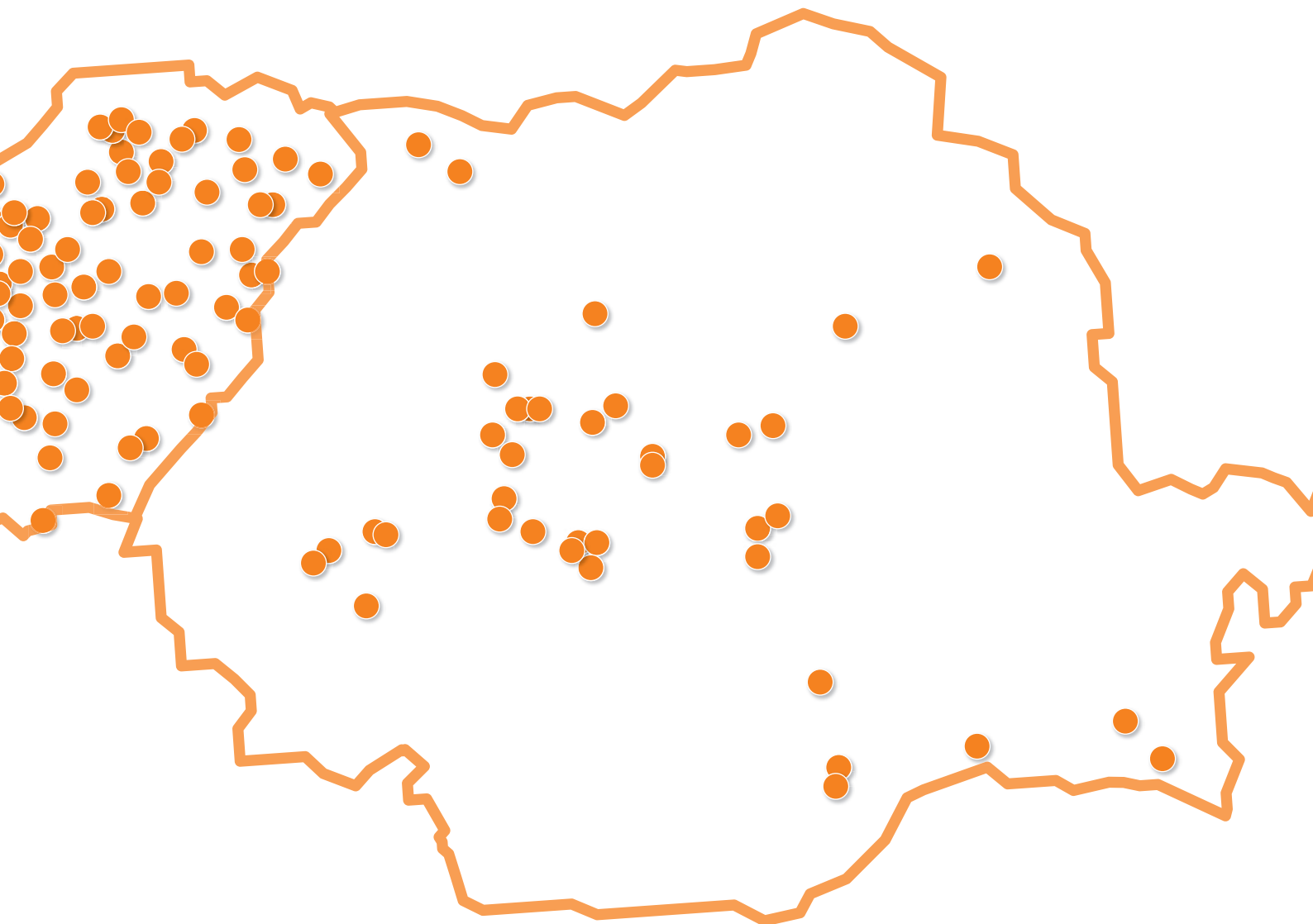




## 2024 in numbers:

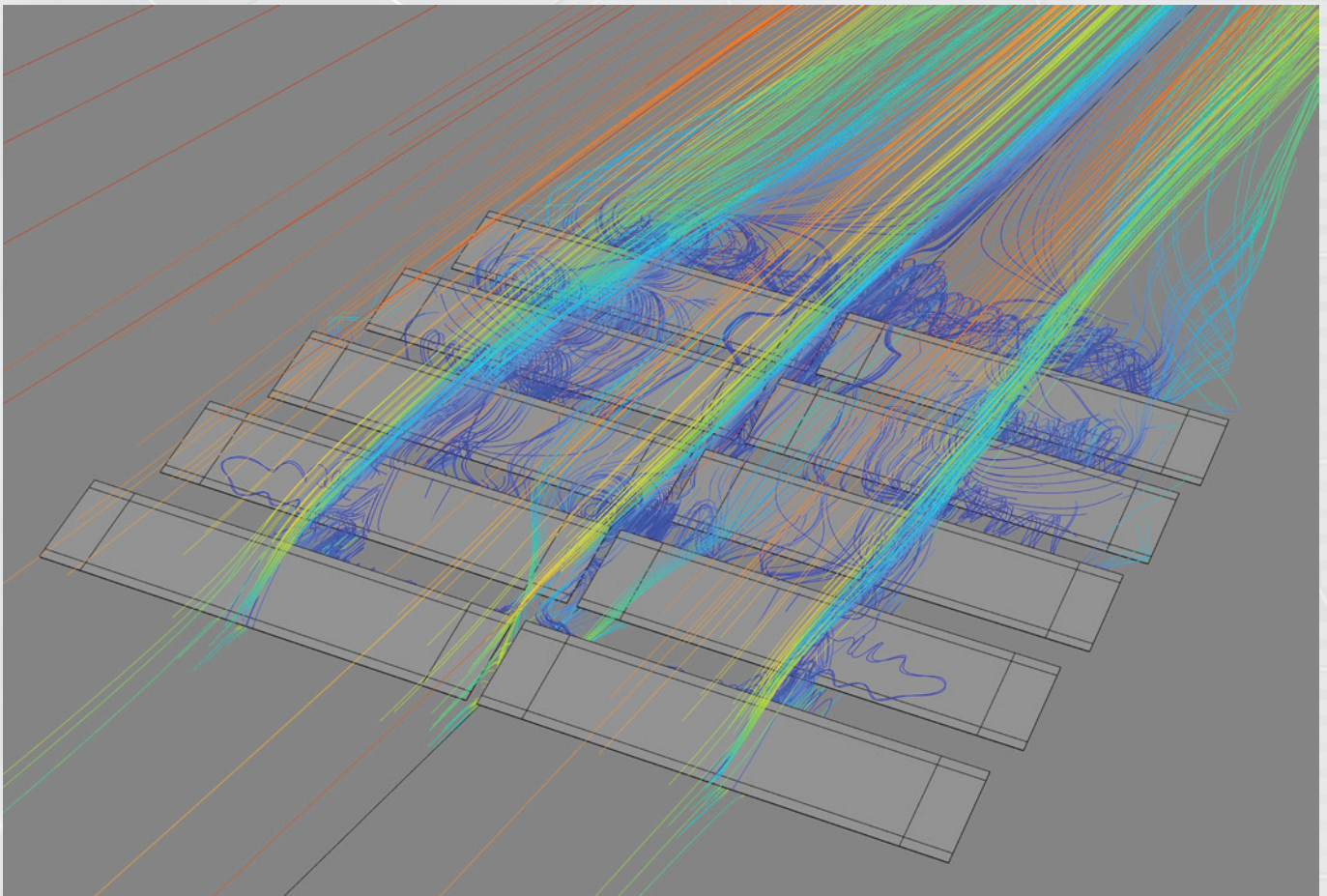
- **HUF 10 billion** turnover
- **150+** employees
- **15,000+ tons** of steel consumption
- **Over 250 MWp** of structural installations
- **Opening 2 new halls** in Vésztő, machinery development

● – References

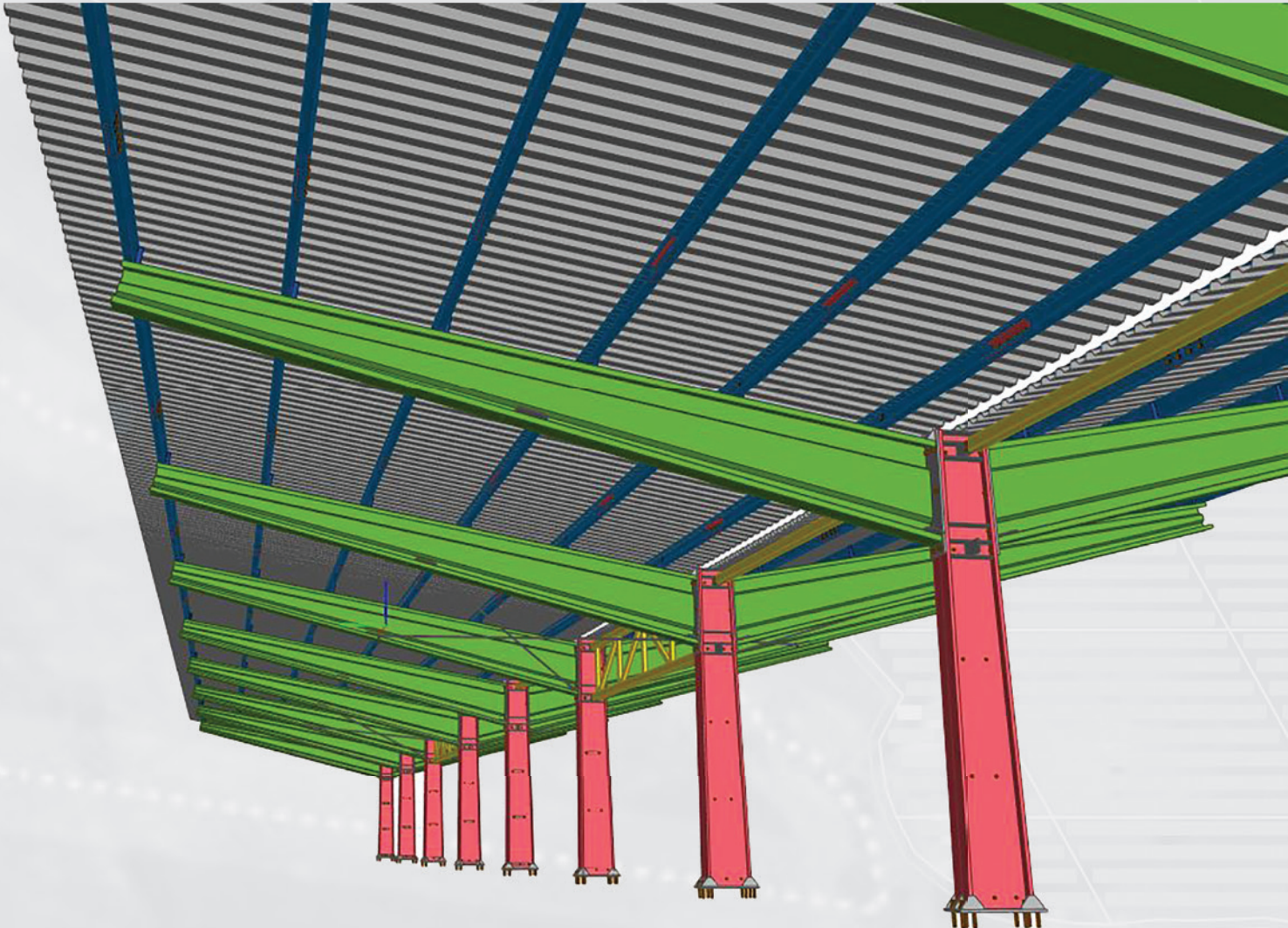
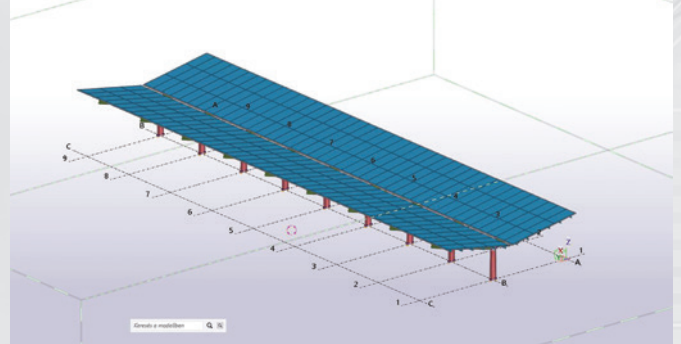
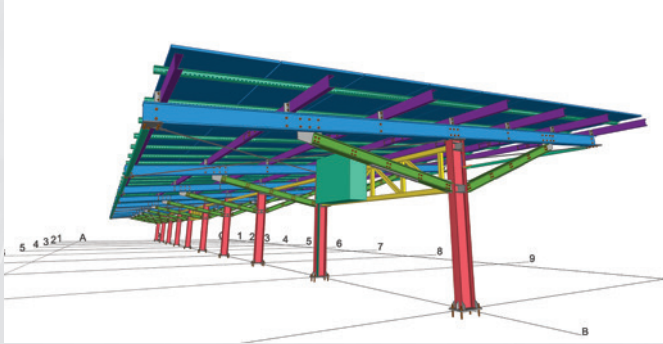


# /ENGINEERING, DEVELOPMENT

- Engineering team of 13 members
- Customized and optimized structural designs for each project
- Structural calculations according to EN 1991 1 Eurocode 1, applying meteorological loads for each country
- Dedicated project engineer for each project
- Wind zone analysis
- Test piling and evaluation with our own structural legs
- CFD simulation



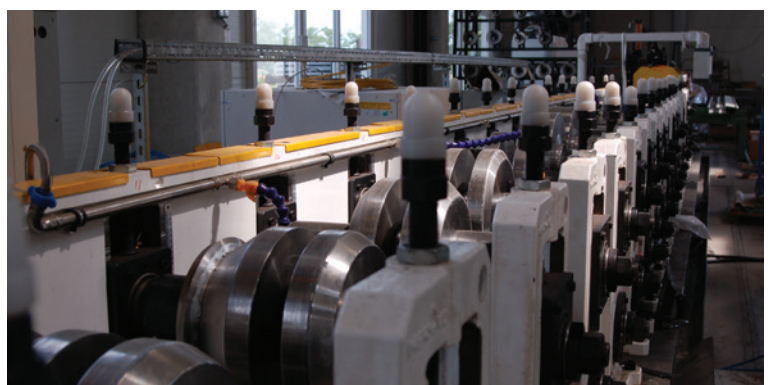
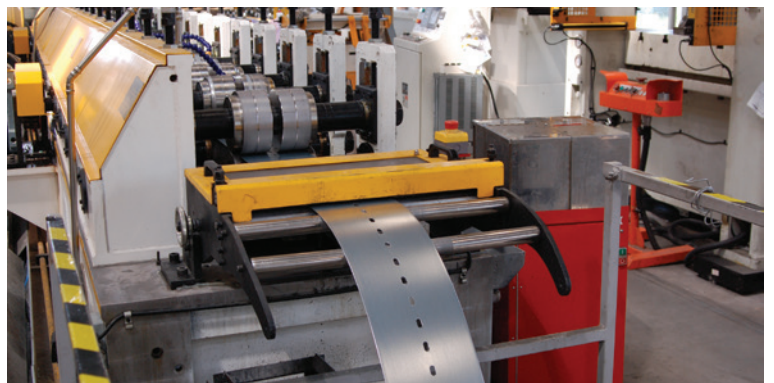




# /PRODUCTION



Presses / Laser cutting / Edge bending / Profiling



# /EPLAN SOLAR SRL.

## ROMANIA



Eplan Solar is the Romanian representative of Electraplan Termelő Kft. since 2022, operating in the photovoltaic market. The personal relationship between the two companies has been ongoing since 2006 through Electraplan Romania. Eplan Solar is specialized in the Romanian market, where it designs and sells Electraplan's fixed-tilt Magnelis/WTopCore covered steel mounting structures for utility- and large scale PV power plants according to local and international standards.

Our main competence is structural, project-specific design and sales, as well as providing high-quality service to local customers. By choosing Eplan Solar, you can count on local expertise, faster communication and customized solutions. We also provide on-site construction consulting and pull-out tests for our own mounting structures, as well as mechanical installation services through our Romanian partners and Electraplan.



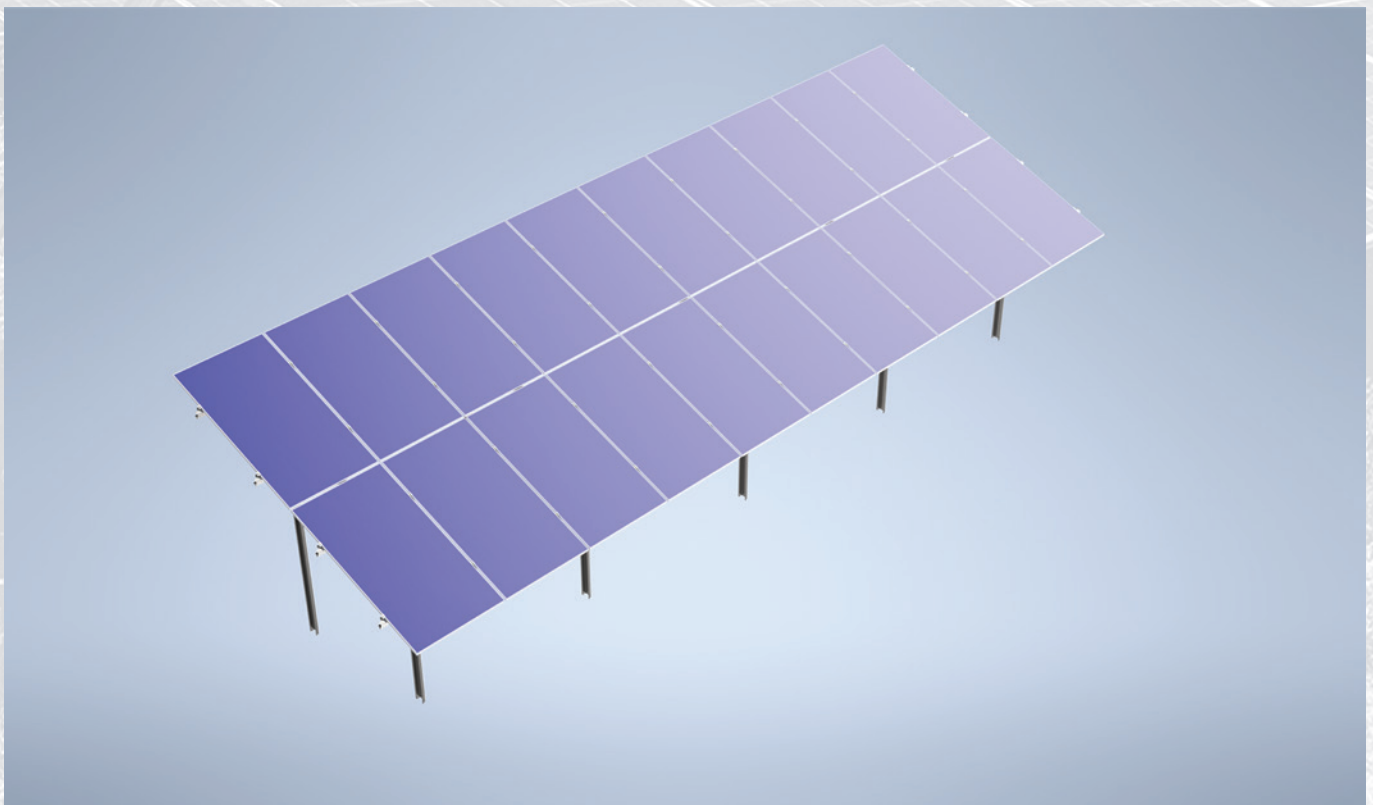
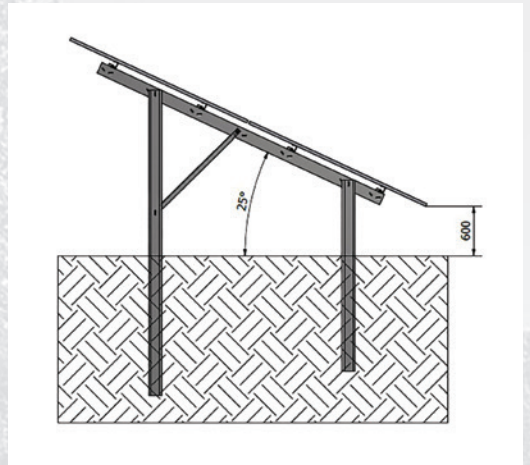




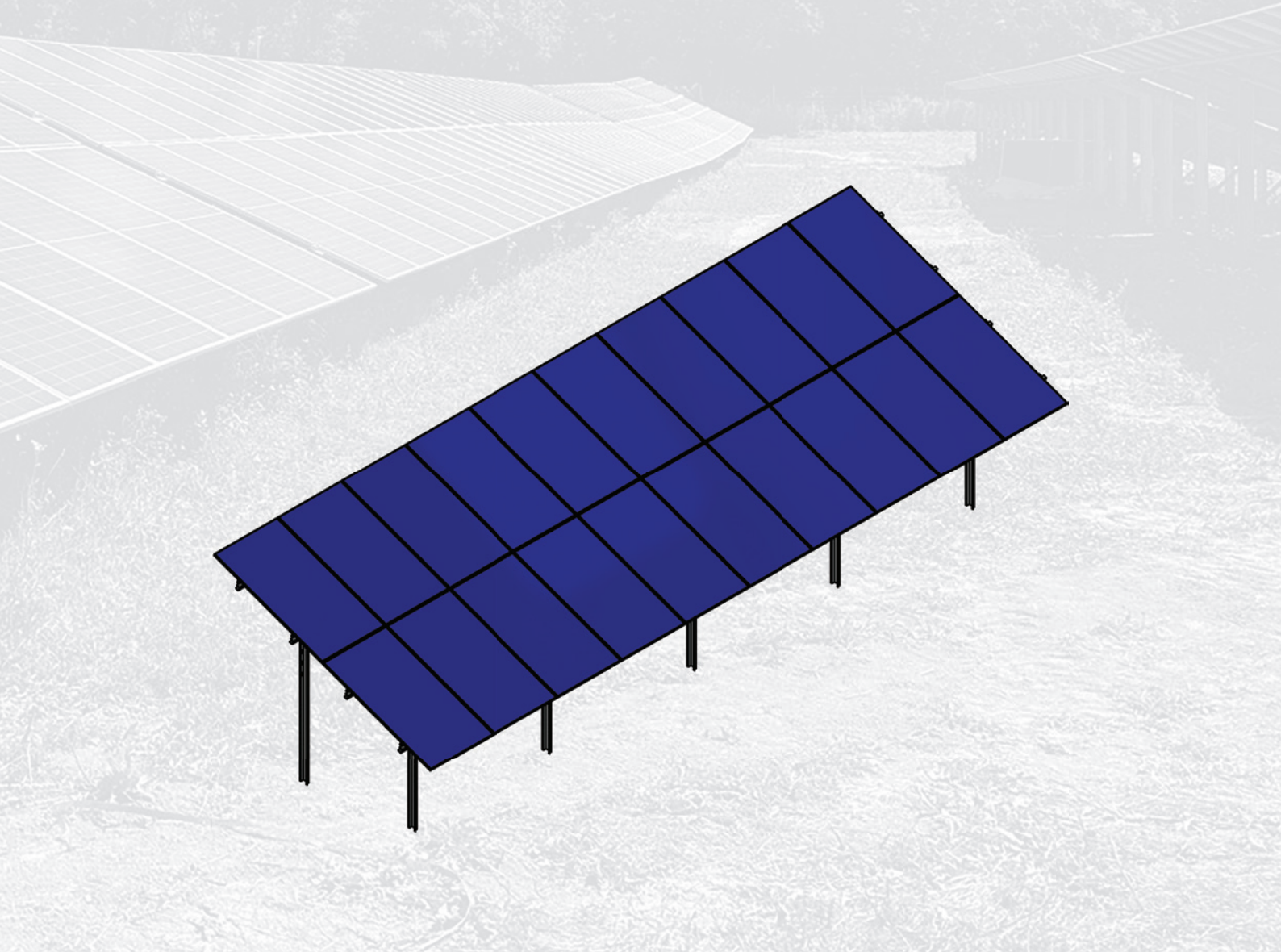
# **GROUND MOUNTING SYSTEMS**



- The E-Solar Eco structure is a two-vertical arrangement system, which we always tailor to the specific project and solar panel size.
- Two-vertical arrangement
- Two-legged solution
- Any string distribution available
- Adjustable for any solar panel size
- Adjustable tilt angle
- Pile-mounteable solution
- Quick and easy installation
- Structural design according to EN 1991 1 Eurocode 1
- Hungarian product

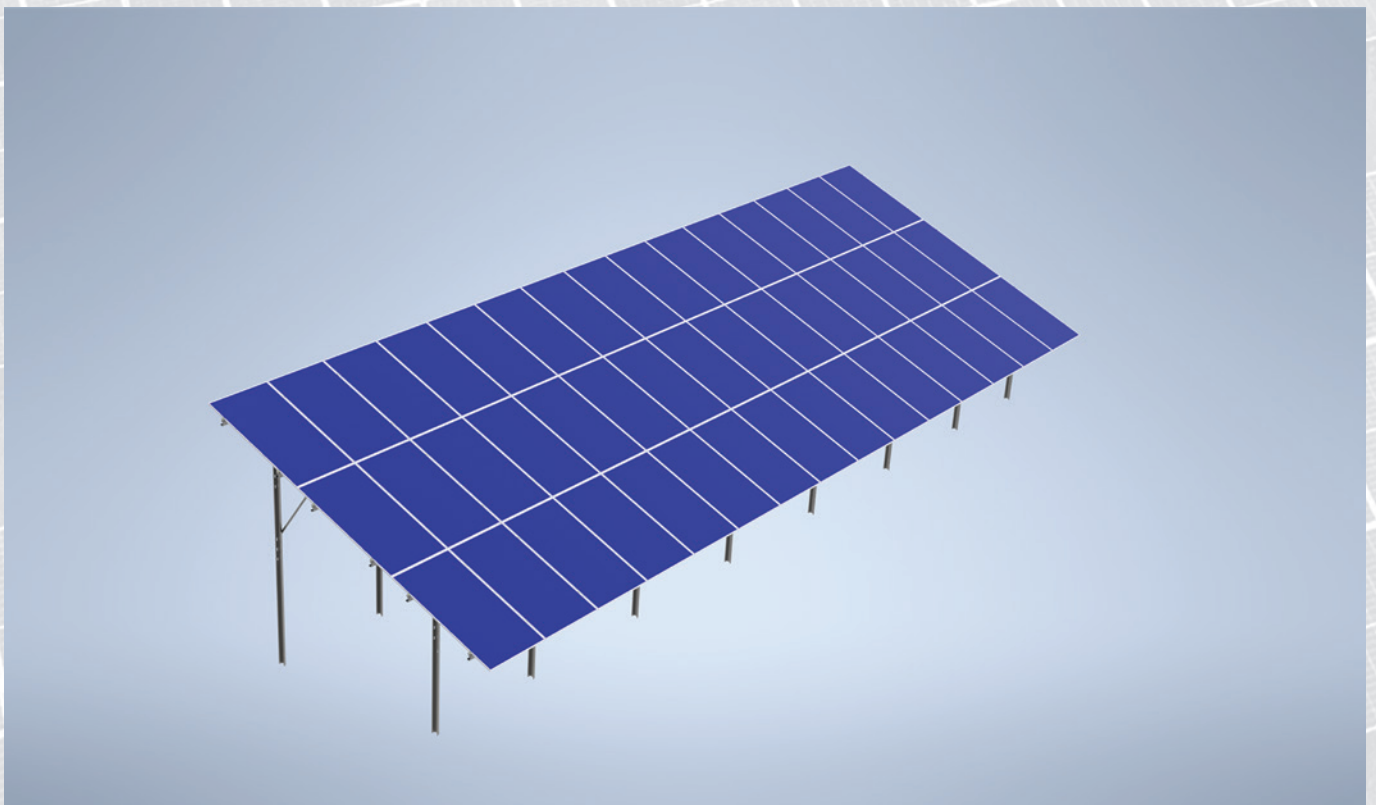
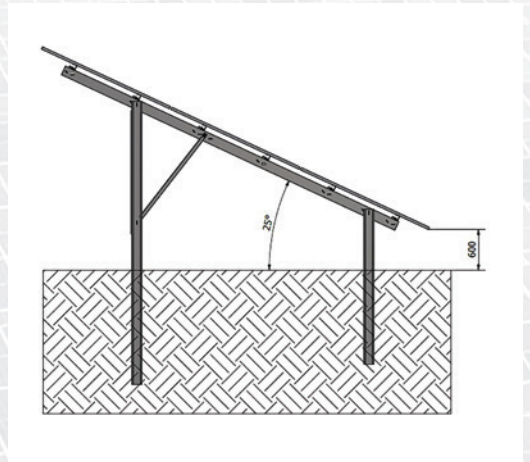


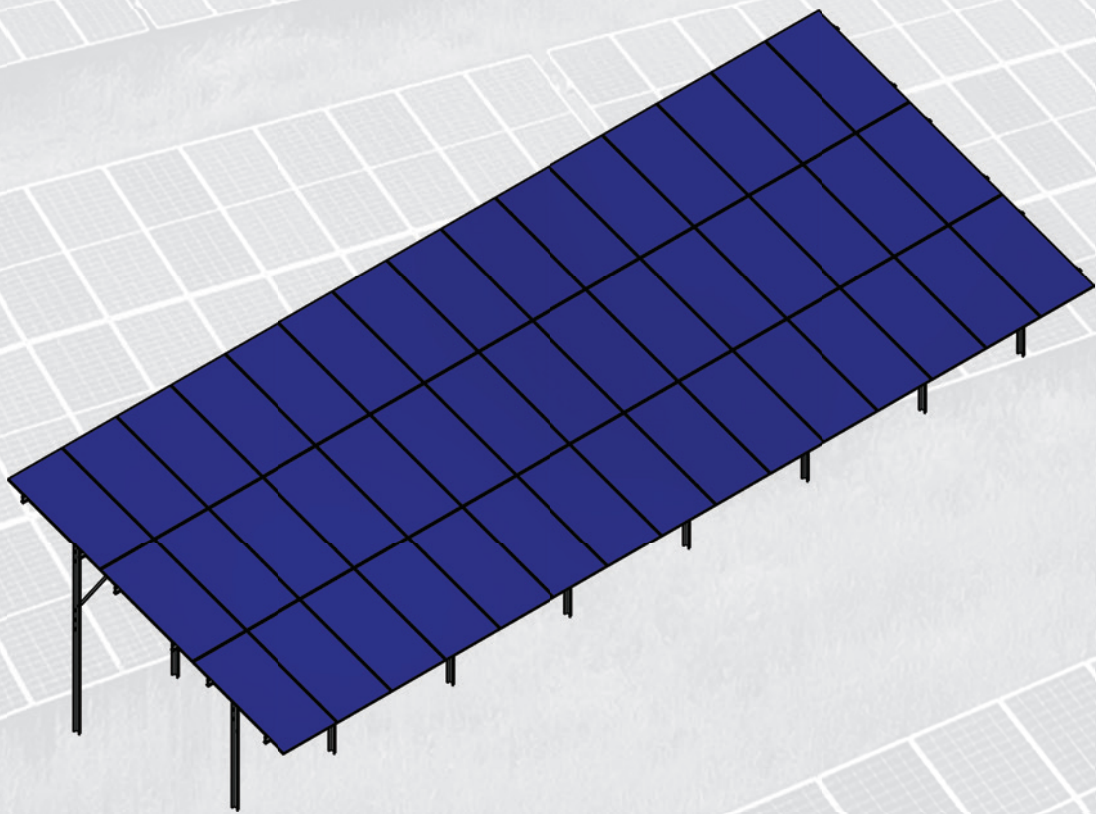




# /GRANDE

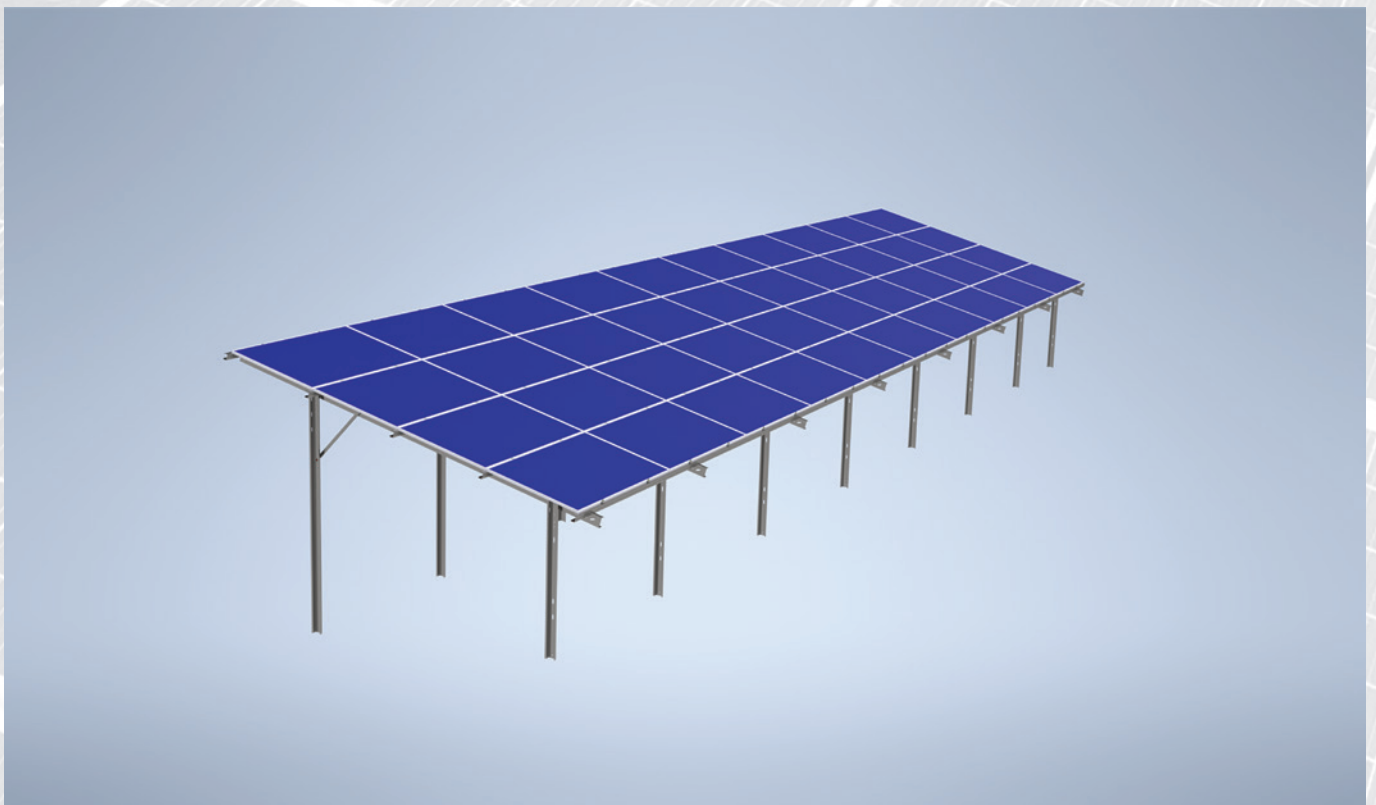
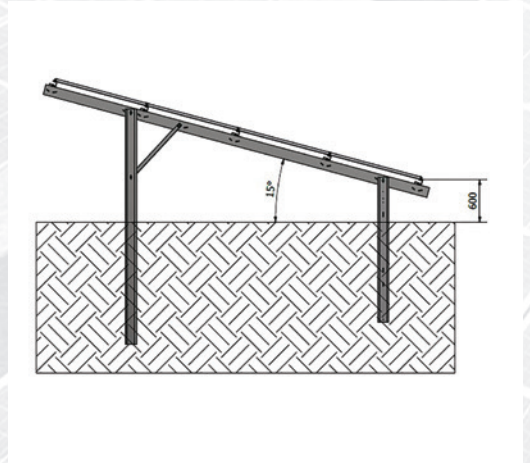
- The E-Solar Grande structure is a three-vertical arrangement system, which we always tailor to the specific project and solar panel size.
- Three-vertical arrangement
- Two-legged solution
- Any string distribution available
- Adjustable for any solar panel size
- Adjustable tilt angle
- Pile-mounteble solution
- Quick and easy installation
- Structural design according to EN 1991 1 Eurocode 1
- Hungarian product

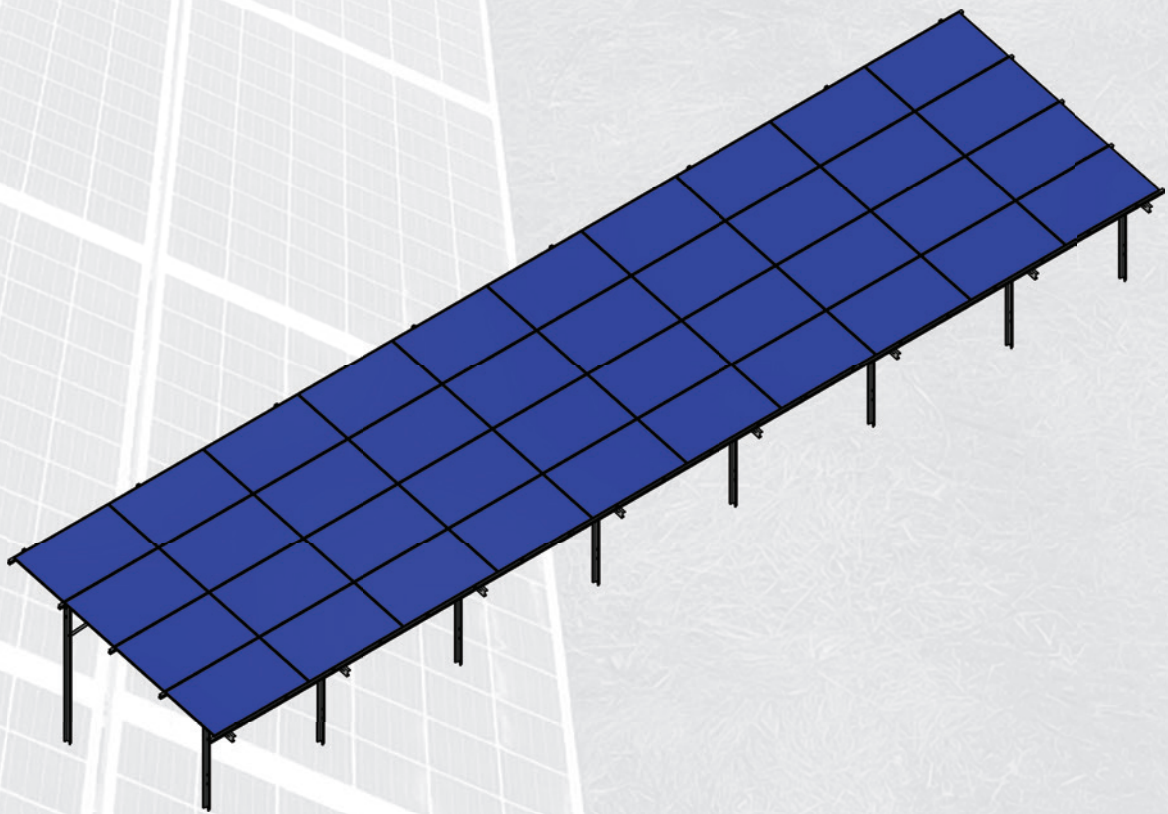




# /QUATTRO

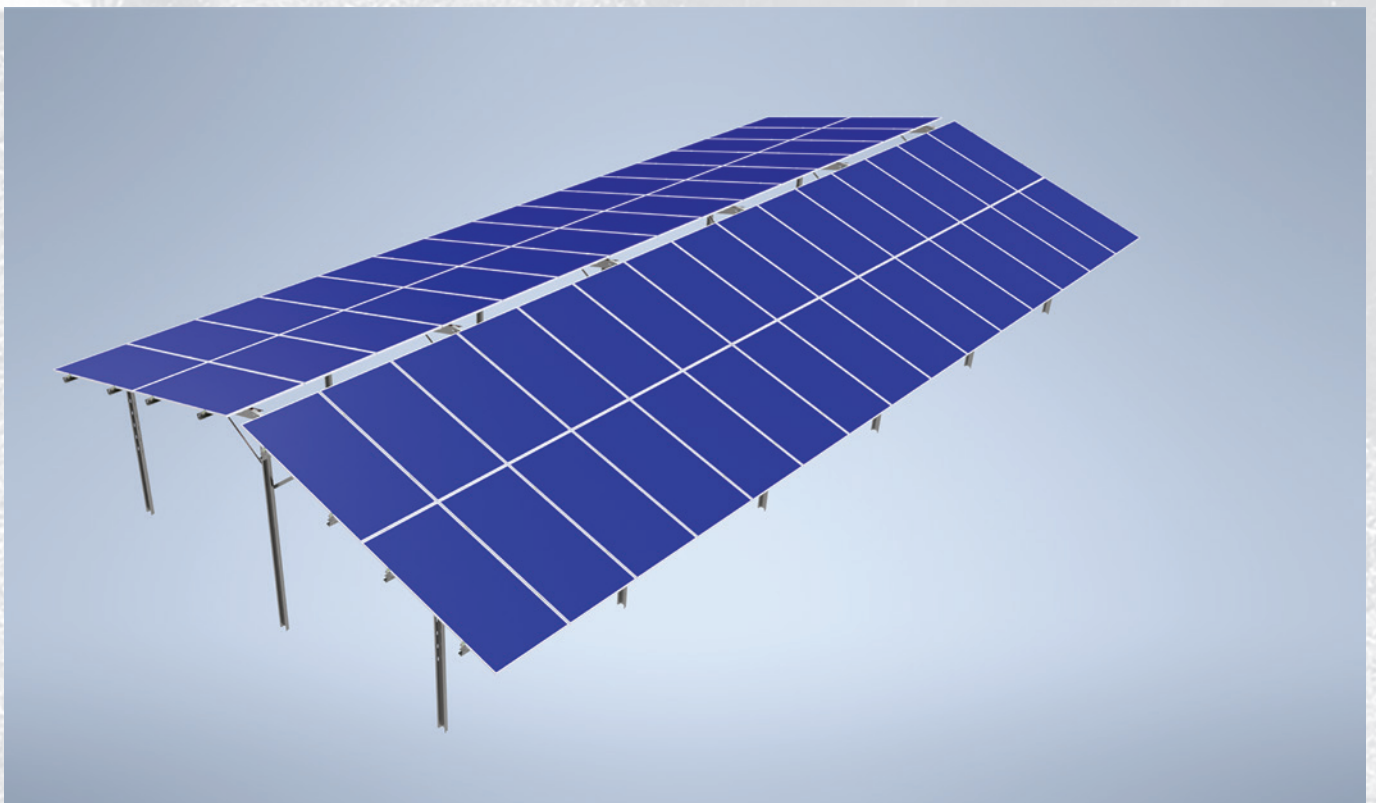
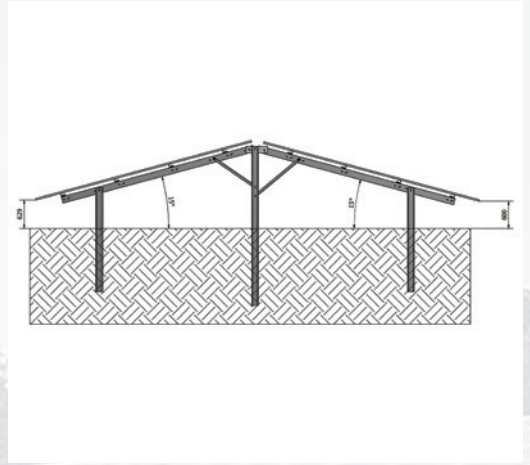
- The E-Solar Quattro structure is a four-horizontal arrangement system, which we always tailor to the specific project and solar panel size.
- Four-horizontal arrangement
- Two-legged solution
- Any string distribution available
- Adjustable for any solar panel size
- Adjustable tilt angle
- Pile-mountable solution
- Quick and easy installation
- Structural design according to EN 1991 1 Eurocode 1
- Hungarian product

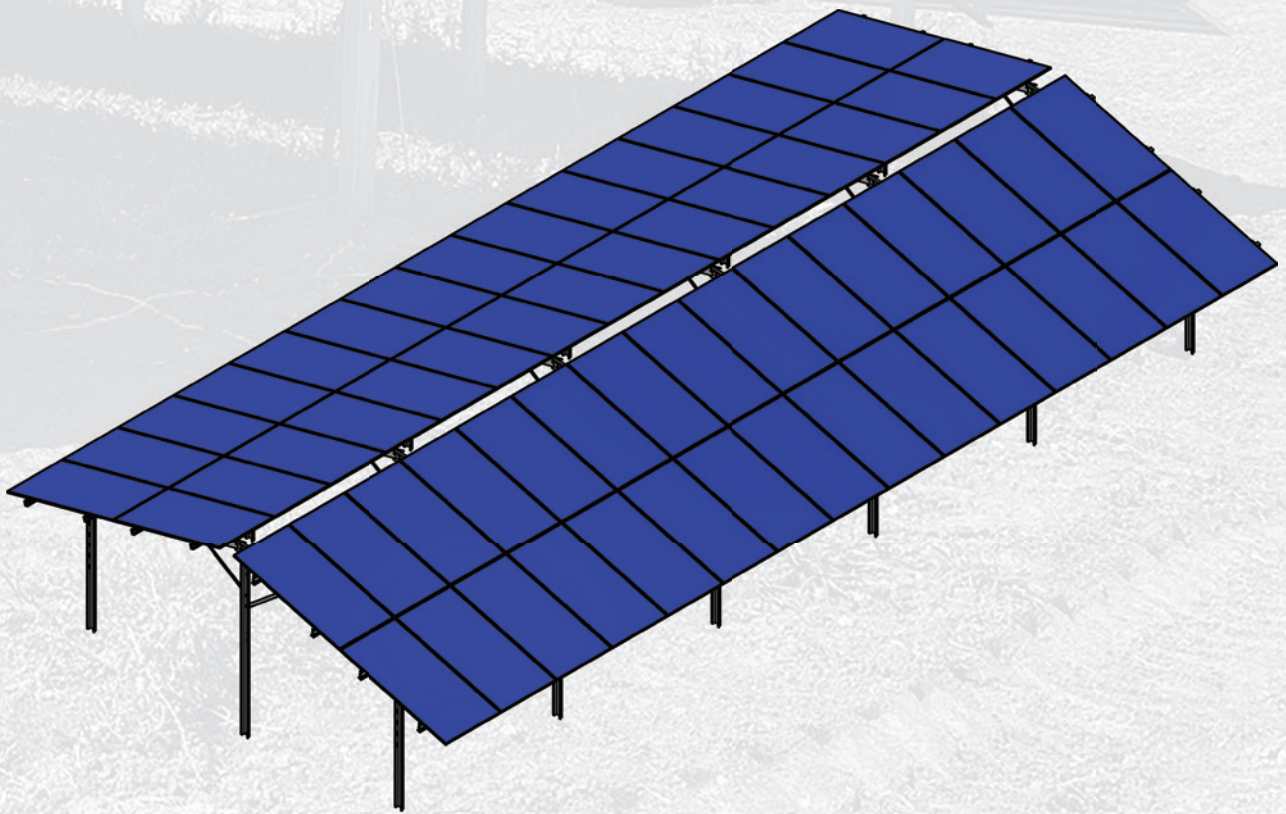




# /ECO E-W 3-PILED

- The E-Solar Eco E-W structure is a two-vertical arrangement, East-West oriented structure, which we always tailor to the specific project and solar panel size.
- Two-vertical arrangement
- Three-piled solution
- East-West orientation
- Any string distribution available
- Adjustable for any solar panel size
- Adjustable tilt angle
- Pile-mounteble solution
- Quick and easy installation
- Structural design according to EN 1991 1 Eurocode 1
- Hungarian product





# /REFERENCES

## GROUND MOUNTING SYSTEMS



Aiud (Nagyenyed) 1 MWp



Aiud K-NY (Nagyenyed) 1 MWp



Alba Iulia (Gyulafehérvár) 0,8 MWp



Mezőcsát 120 MWp



Bicske 4 MWp





Berente 20 MWp



Brasov (Brassó) 4,3 MWp



Boldog 7,5 MWp



Cegléd 1 MWp



Cluj-Napoca (Kolozsvár) 0,5 MWp



Iasi (Jászvásár) 1 MWp



Túrkeve 54 MWp



Jászberény 10 MWp



Miercurea Ciuc (Csíkszereda) 3,2 MWp



Kiskunhalas 73 MWp



Győr 2,7 MWp



Miercurea Sibiului (Szerdahely) 3,7 MWp



Mosonmagyaróvár 5 MWp



Nagyréde 3 MWp



Nyirád (Own power plant) 1 MWp



Óhíd (Own power plant) 500 kWp



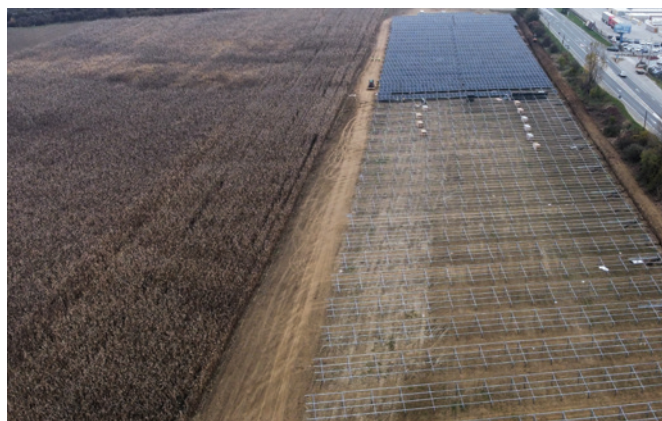
Rezi 500 kWp



Sajószentpéter 20 MWp



Berente 20 MWp



Saratel (Szeretfalva) 2,9 MWp



Sighisoara (Segesvár) 1,4 MWp



Sebes (Szászsebes) 4,6 MWp



Szentkirályszabadja 500 kWp



Tápióbecske 2 MWp



Szajol 1,5 MWp



Várpalota 3,5 MWp



Tizsasüly 1 MWp



Voislova (Szörénybalázsd) 1,5 MWp

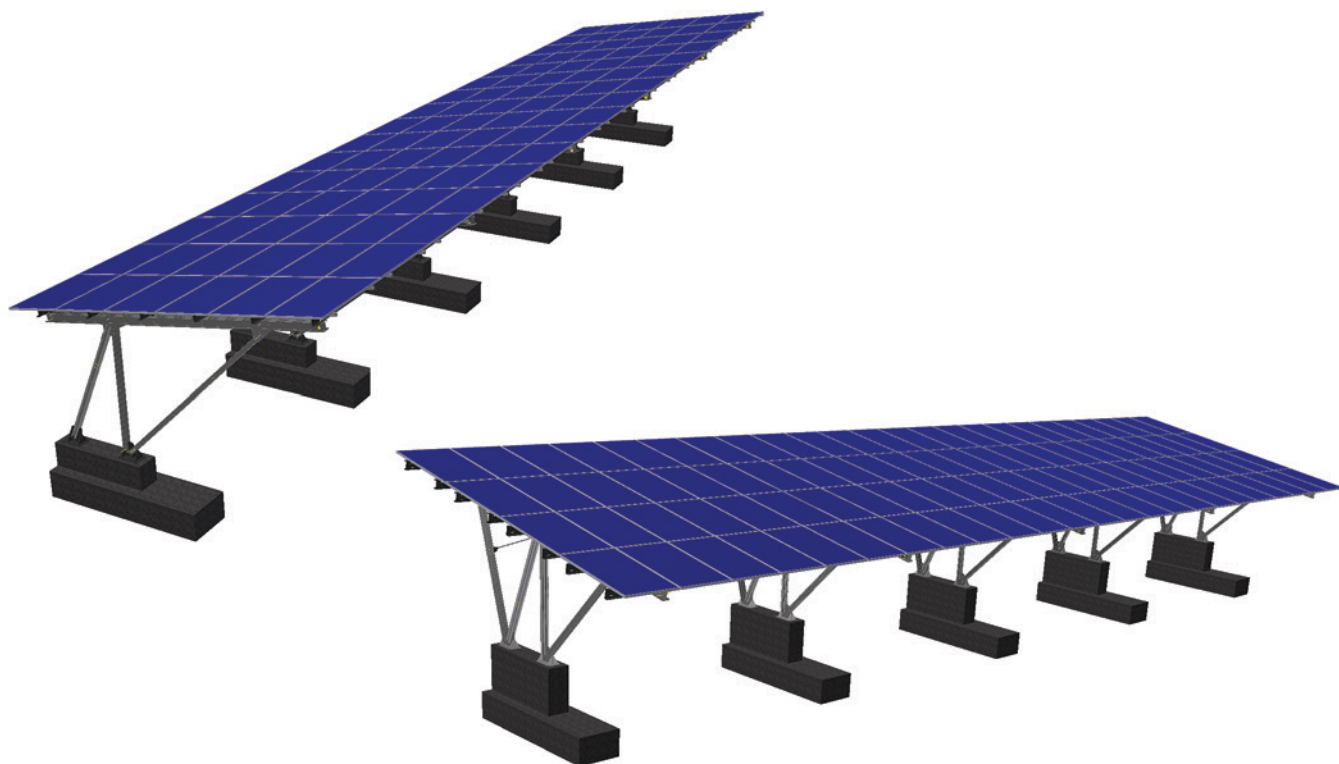
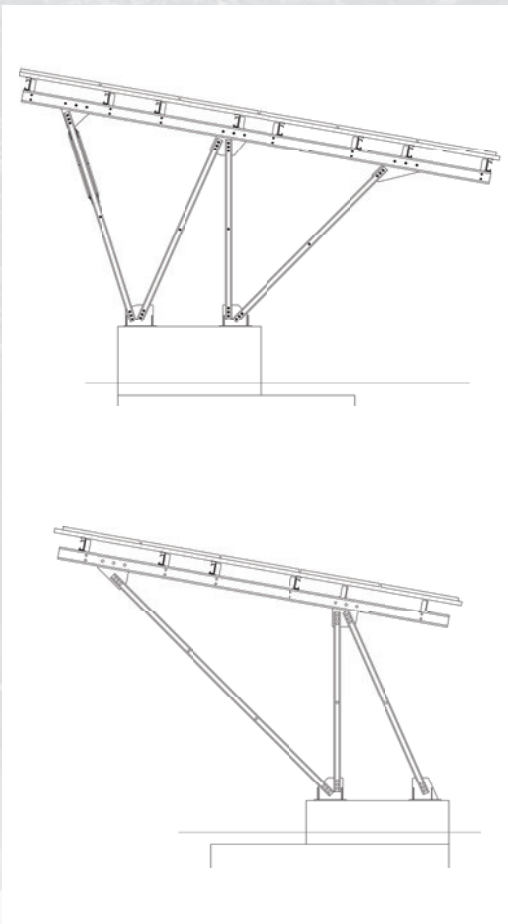


# **CARPORTS**



# /E-SOLAR FCP/BCP

- According to customer requirements six-horizontal or three- or four-vertical arrangement
- 2 cars can be parked between the footings, and the height of the frame allows taller vehicles to be parked underneath
- Modularly expandable
- Concreted legs
- Quick and easy installation
- Load capacity certified by static expertise
- Hungarian product

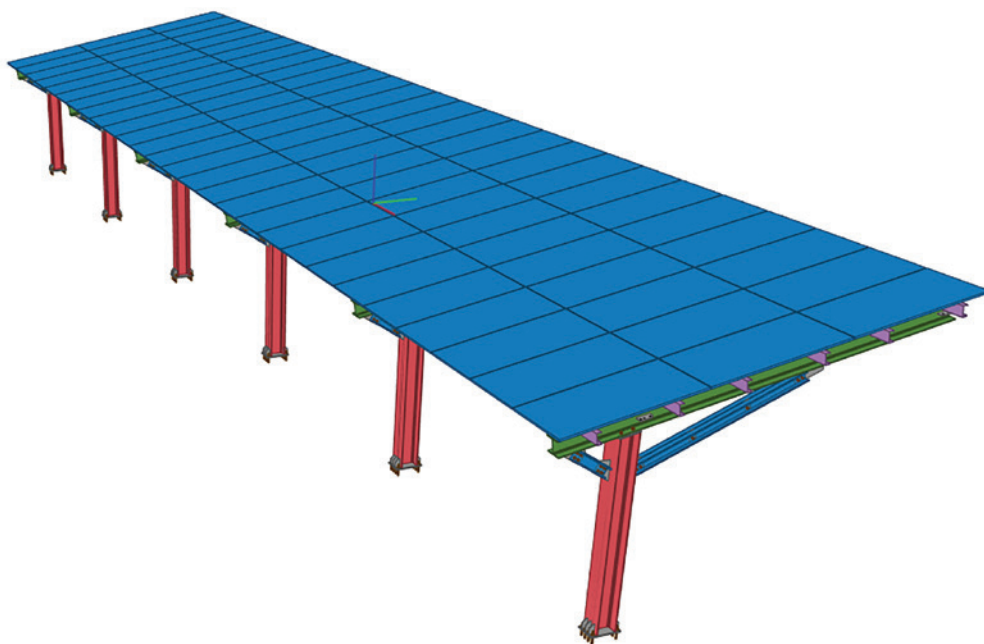
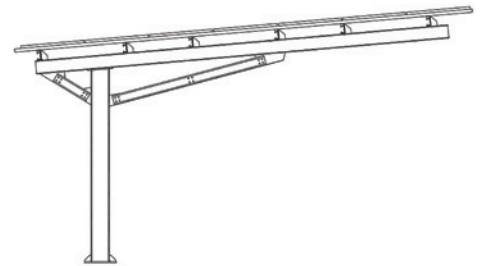






# /E-SOLAR-ON-SIDE-O/C-CP

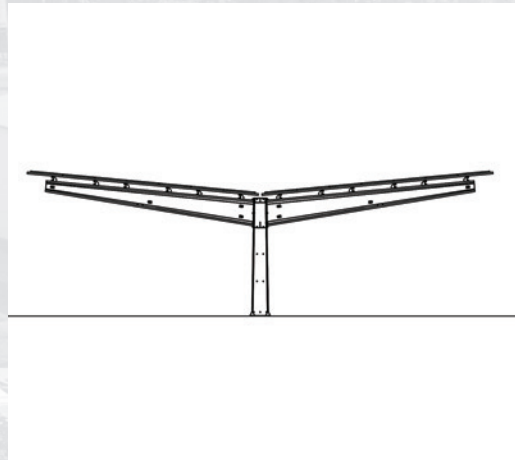
- For parking, both open and closed structures are available, and both vertical and horizontal arrangements are possible according to customer requirements.
- Water-tight version also available
- Modularly expandable
- Vehicles can be parked next to each other on one side due to the central legs
- 5-7.5° tilt angle
- Built from specially bent and rolled elements, welded and bolted structure
- Quick and easy installation
- Load capacity certified by static expertise
- Hungarian development and product





# /E-SOLAR-KTA-EW-CP

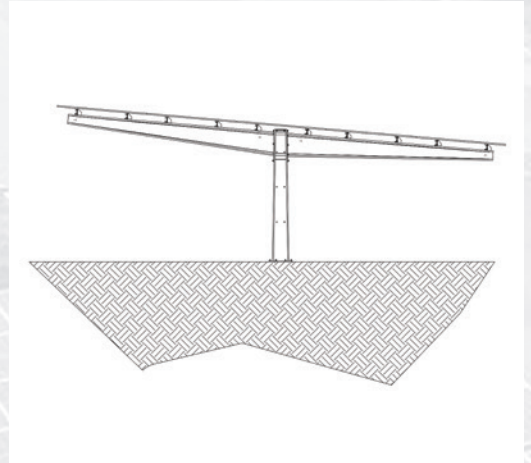
- East-West orientation, both vertical and horizontal arrangements are possible according to customer requirements
- Water-tight version also available
- Modularly expandable
- Vehicles can be parked next to each other on one side due to the central legs
- 5° tilt angle
- Built from specially bent elements, welded and bolted structure
- Quick and easy installation
- Load capacity certified by static expertise
- Hungarian development and product





# /E-SOLAR-KTA-S-CP

- South orientation, both vertical and horizontal arrangements are possible according to customer requirements.
- Water-tight version also available,
- Modularly extendable
- Vehicles can be parked next to each other on one side due to the central legs
- 5-7.5° tilt angle
- Built from specially bent elements, welded and bolted structure
- Quick and easy installation
- Load capacity certified by static expertise
- Hungarian development and product





# /REFERENCES

## CARPORTS



Enying 50 kWp



Aquaworld 400 kWp



Budapest 1,1 MWp



Jászalkotó 200 kWp





Jászberény 380 kWp



Nagytarcsa 370 kWp



Vésztő (Own power plant) 500 kWp

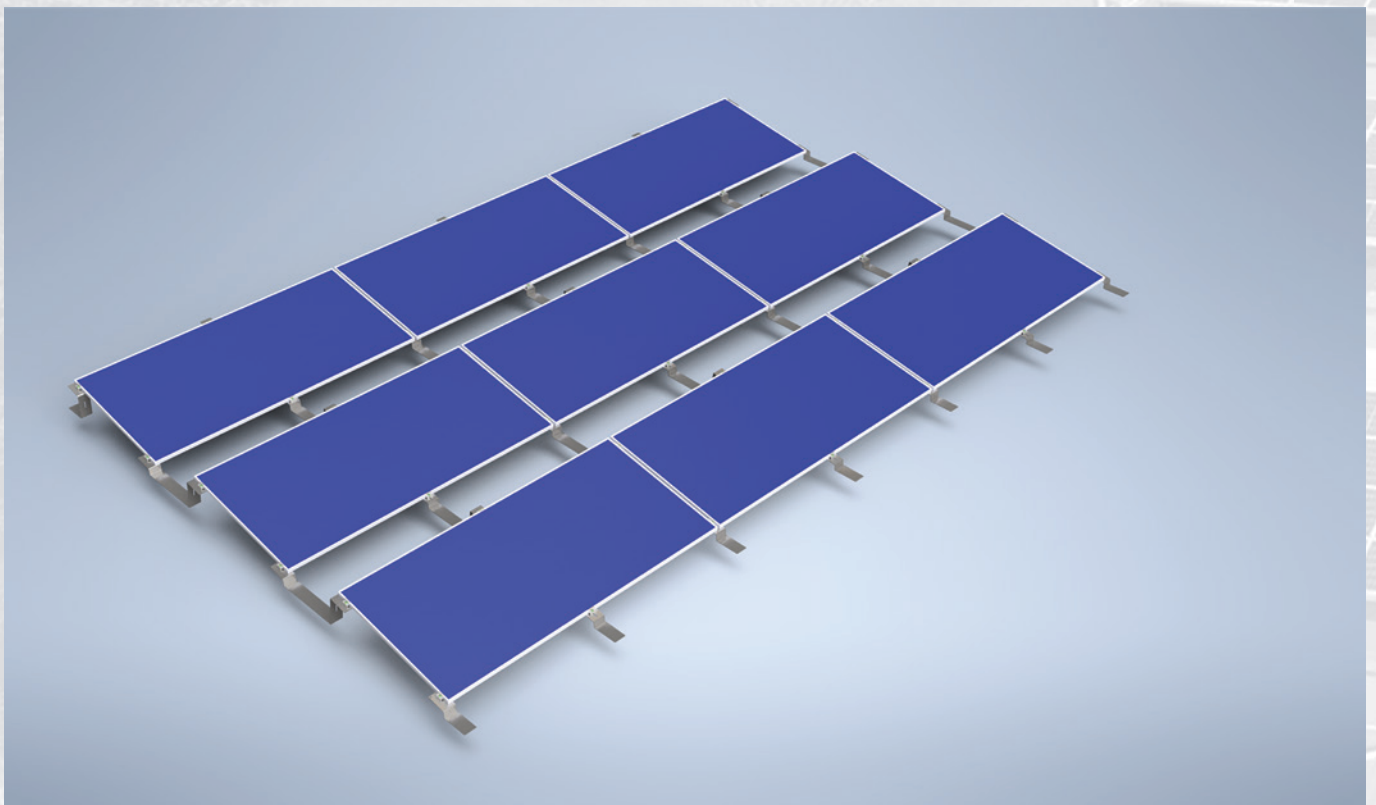


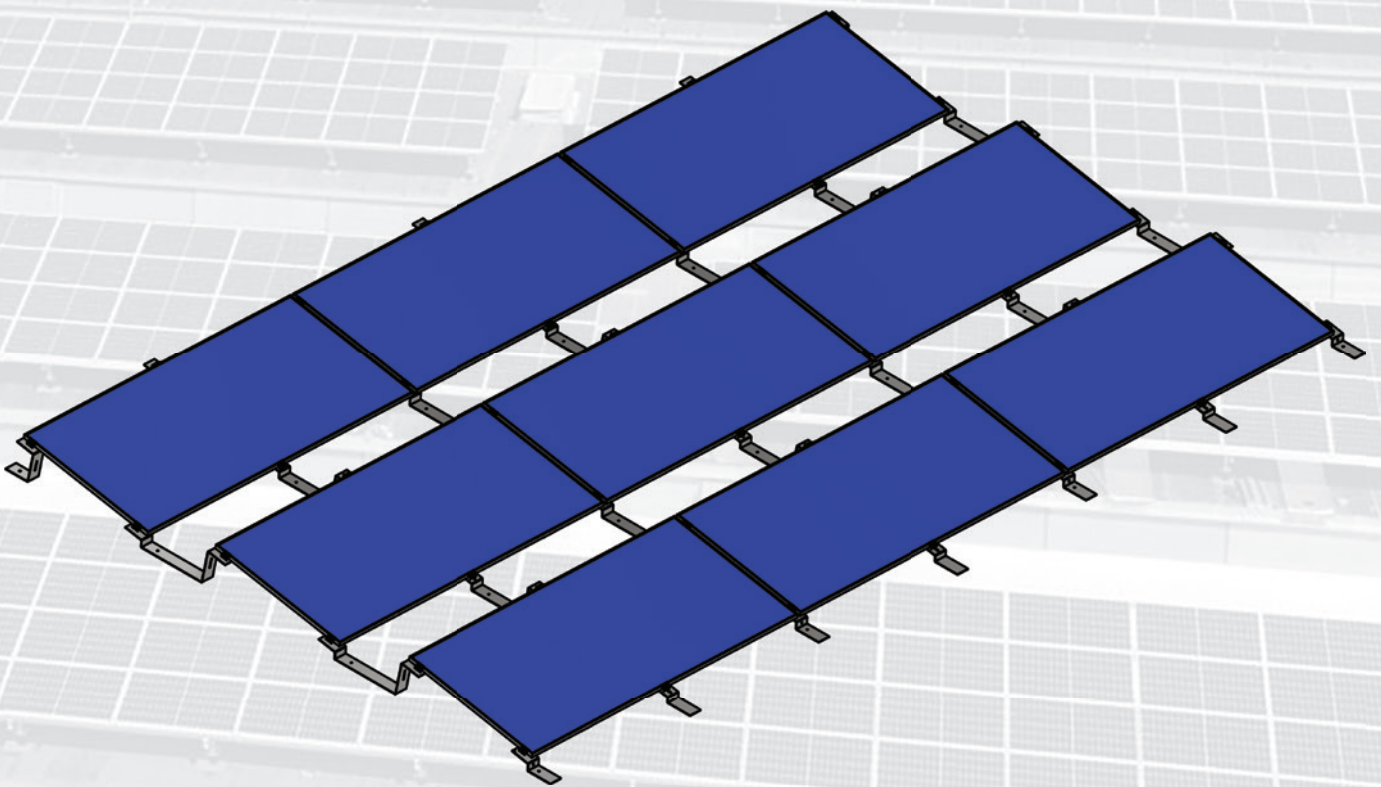
# **FLAT ROOF MOUNTING SYSTEMS**



# /E-SOLAR EASYFLAT-S

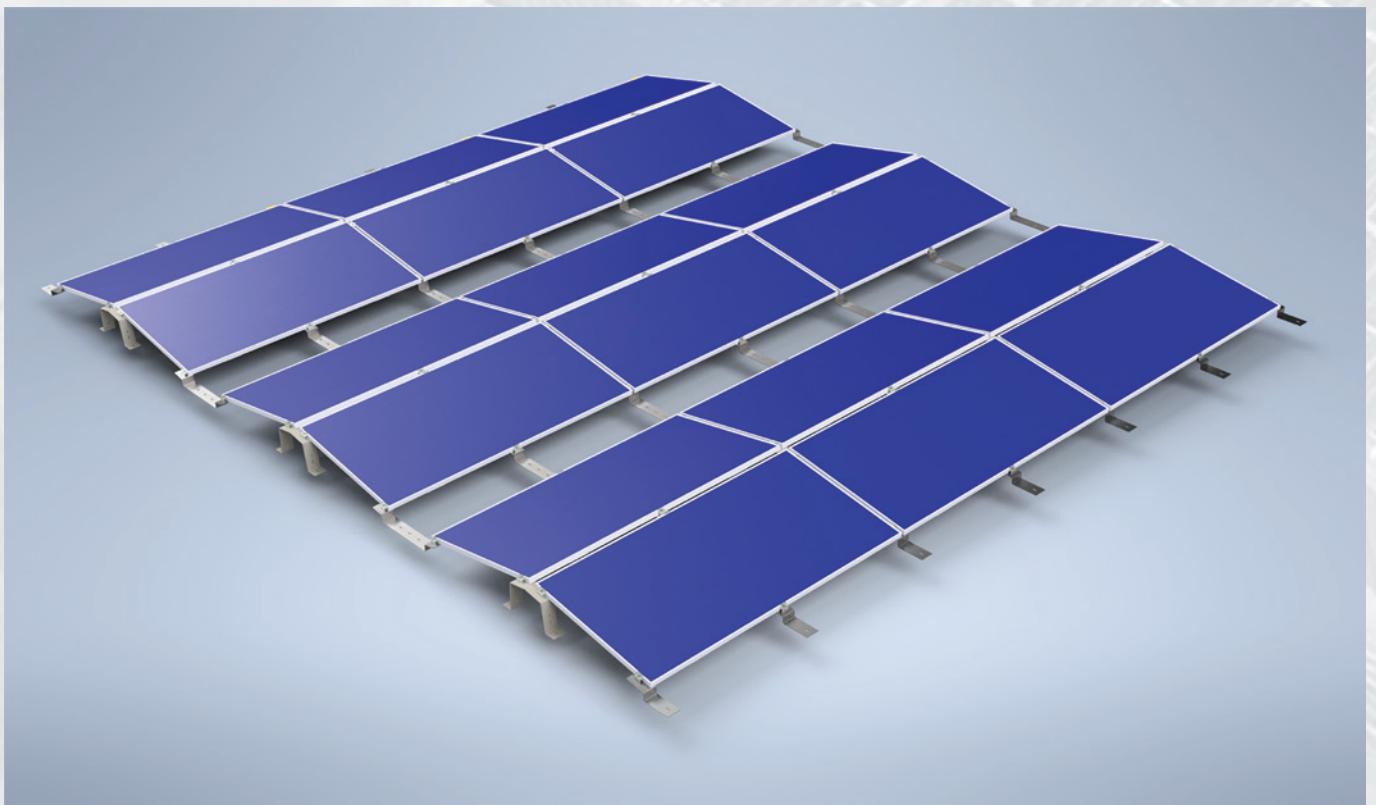
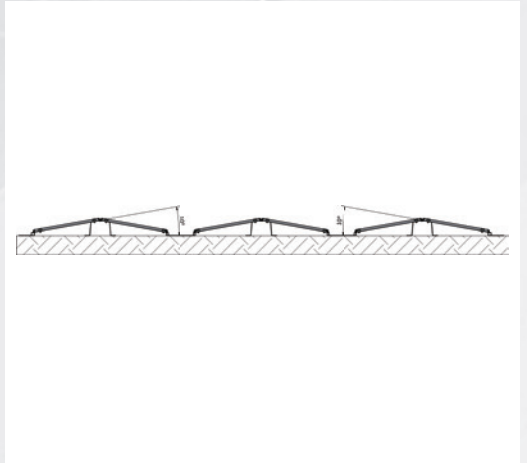
- The E-Solar EasyFlat-S structure is a single-horizontal arrangement flat roof structure, which we always tailor to the specific project and solar panel size.
- Single-horizontal arrangement
- South orientation
- Any string distribution available
- Adjustable for any solar panel size
- 10° tilt angle
- 6-point support
- Ballasted fixation
- Quick and easy installation
- Structural design according to EN 1991 1 Eurocode 1
- Hungarian product

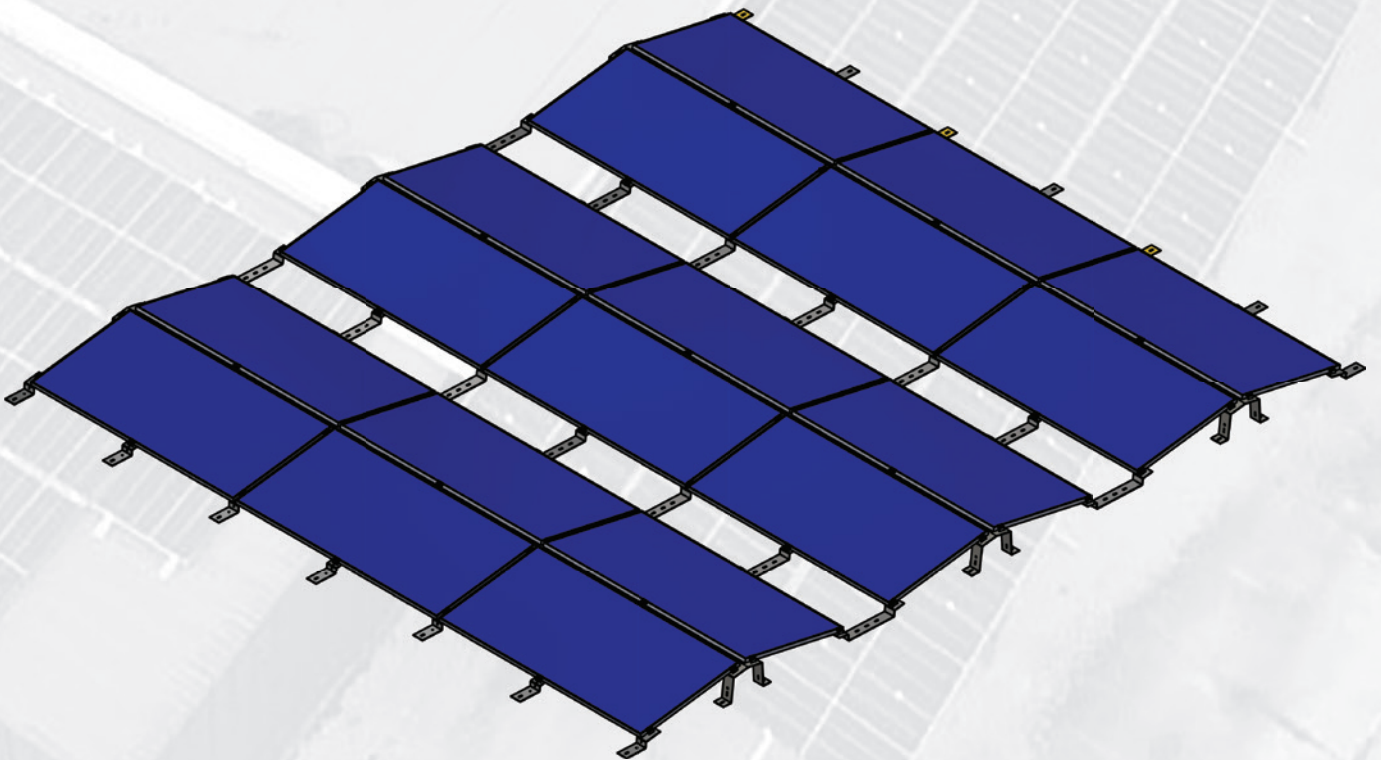




# /E-SOLAR EASYFLAT-E-W

- The E-Solar EasyFlat-E-W structure is a single-horizontal arrangement flat roof structure, which we always tailor to the specific project and solar panel size.
- Single-horizontal arrangement
- East-West orientation
- Any string distribution available
- Adjustable for any solar panel size
- 10° tilt angle
- 6-point support
- Ballasted fixation
- Quick and easy installation
- Structural design according to EN 1991 1 Eurocode 1
- Hungarian product





# /REFERENCES

## FLAT ROOF MOUNTING SYSTEMS



Aquaworld 85 kWp



Bucuresti (Bukarest) 1 MWp

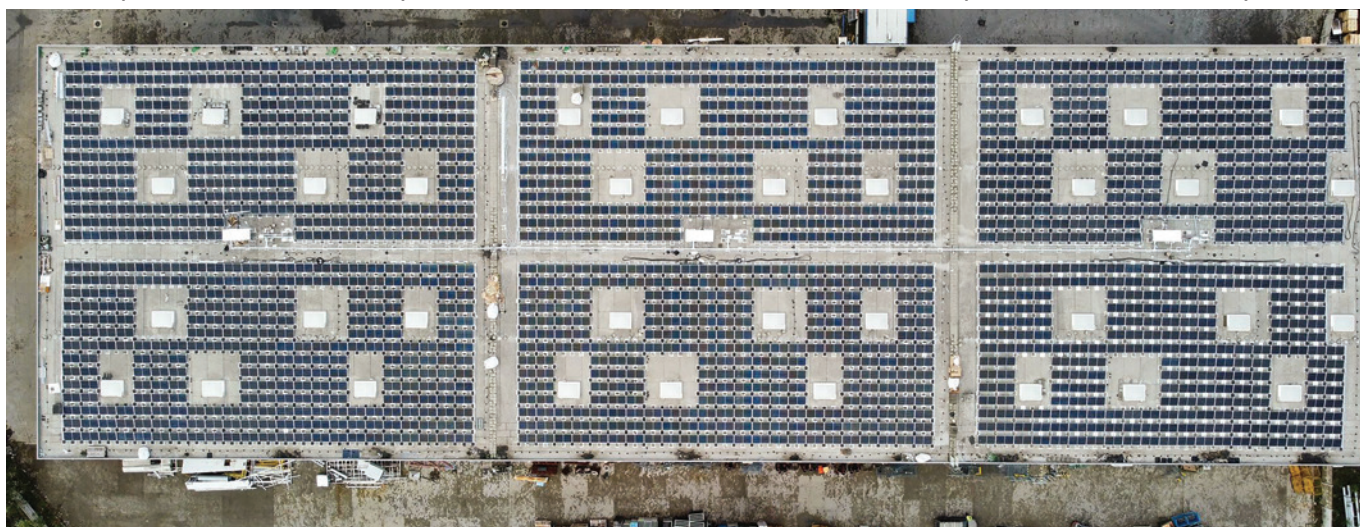




Nyírád (Own power plant) 250 kWp



Óhíd (Own power plant) 50kWp



Jászberény 1,8 MWp



Románia, Sepsiszentgyörgy 200 kWp



Sibiu (Nagyszeben) 0,8 MWp

# /MECHANICAL INSTALLATION

Our company has a professional team and machinery fleet, with which we can undertake the mechanical execution of projects of 0.5 MWp or higher.

Types of work:

- Setting GPS coordinates
- Piling
- On-site logistics
- Installation of mounting systems
- Installation of solar panels



## CERTIFICATE OF CONFORMITY of the FACTORY PRODUCTION CONTROL (FPC) in accordance with EN 1090-1

in compliance with Regulation 305/2011/EU of the European Parliament and of the Council of 09 March, 2011 (CPR)

The Certification Body TÜV Thüringen Hungary Kft.

certifies the following:

**Manufacturer:**  
(Manufacturer or its authorized representative)

**ELECTRAPLAN-Termelő Kft.**  
**H-2030 Érd, Budafoki út 10.**

**Manufacturing plant(s):**  
(Production site of the manufacturer)

H-5530 Vészto, külterület hrsz. 0762/1, 0762/2 – (EN 1090-2,-3,-4)  
H-8454 Nyírad, külterület hrsz. 0124/11 – (EN 1090-4)

**Product:**

**Structural Steel Components up to EXC 3 acc. to EN 1090-2 (Vészto TH),  
Aluminium structures up to EXC2 acc. to EN 1090-3 (Vészto TH),  
Cold-formed structural steel elements up to EXC1 acc. to 1090-4 (Vészto TH és Nyírad TH)**

**CE-marking method:**

ZA 3.3, ZA 3.4 acc. to EN 1090-1: 2009+A1:2011, annex ZA

**Confirmation:**

This certificate attests that all provisions concerning the assessment and verification of constancy of performance described in Annex ZA of the standard

**EN 1090-1:2009+A1:2011**

under system 2+ are applied and the factory production control fulfils all the prescribed requirements set out above.

The above-mentioned company is entitled to use the **CE 3046** conformity mark.

**Begin of validity:**  
(First issue date)

**20.06.2024**

**End of validity:**  
(surveillance date)

**19.06.2025**

**Period of validity:**

This certificate will remain valid as long as the test methods and/or factory production control requirements included in the harmonised standard, used to assess the performance of the declared characteristics, do not change, and the product and the manufacturing conditions in the plant are not modified significantly.

**Report nr.:**

TTHU-VT-24-1022J

**Remarks:**

To this certificate belong the welding certificate(s):  
**TTHU-1090-2- 24-1022T**

**Place / issue date:**

Budapest / 05.07.2024

**Certificate Nr.:**

**TTHU-1090-1-34-1022T**



*Wiegand*

Krisztina Wiegand  
Notified Body



Product certification body accredited by NAH under No NAH-6-0073/2024/K

TÜV Thüringen Hungary Kft.  
H-1118 Budapest, Budaörsi út 45.

web: tuv-hungary.hu | e-mail: info@tuv-hungary.hu

## WELDING CERTIFICATE

In compliance with EN 1090-1, Tab. B.1

the Certification Body TÜV Thüringen Hungary Kft.

certifies the following:

<b>Manufacturer:</b> (Manufacturer or its authorized representative)	<b>ELECTRAPLAN-Termelő Kft.</b> <b>H-2030 Érd, Budafoki út 10.</b>
<b>Essential manufacturing facility(ies):</b> (Production site of the manufacturer)	<b>H-5530 Vésztő, külterület hrsz. 0762/1, 0762/2</b>
<b>Technical specification:</b>	<b>EN 1090-2:2018</b> <b>EN 1090-3:2019</b>
<b>Execution class:</b>	<b>up to EXC3 acc. to EN 1090-2</b> <b>up to EXC2 acc. to EN 1090-3</b>
<b>Welding Process(es):</b> (Reference no. Acc.to DIN EN ISO 4063)	<b>111 - Shielded Metal Arc Welding</b> <b>131 - Gas Shielded Metal Arc Welding</b> <b>135 - Gas Shielded Metal Arc Welding</b> <b>141 - Gas Tungsten Arc Welding</b>
<b>Parent Material(s):</b> (Grade/Standard)	<b>M-Group 1.1, 1.2, 8.1, 22.4-22.1 acc. to CEN ISO/TR 15608 and</b> <b>DIN EN 1090-2, sec. 5</b>
<b>Responsible Welding Coordinator:</b> (Title, First name, Name, Qualification)	<b>Mihály Gábor Hrivnák, IWE/EWE, Level C</b>
<b>Deputy:</b> (Title, First name, Name, Qualification)	<b>Mihály Gábor Hrivnák jr., IWE/EWE, Level C</b> <b>József Jakab, certified welder (with appropriate welding technology</b> <b>practice), Level B</b>
<b>Confirmation:</b>	All provisions concerning welding as described in the above mentioned technical specification(s) were applied.
<b>Begin of validity:</b> (First issue date)	<b>20.06.2024</b>
<b>End of validity:</b> (Surveillance date)	<b>19.06.2025</b>
<b>Period of validity:</b>	This certificate is valid as long as the provisions of the above-mentioned technical specification, in conjunction with EN 1090-1, do not change and the manufacturing conditions of the relevant operating facility(s) or the factory production control itself have not changed significantly
<b>Remarks:</b>	This Welding Certificate is valid in conjunction with the FPC-Certificate Nr. <b>TTHU-1090-1-24-1022T</b>
<b>Place / issue date</b>	Budapest / 04.07.2024
<b>Certificate Nr.:</b>	<b>TTHU-1090-2-24-1022T</b>



Krisztina Wiegand  
Notified Body



Product certification body accredited by NAH under No NAH-6-0073/2024/K

TÜV Thüringen Hungary Kft.  
H-1118 Budapest, Budaörsi út 45.

web: [tuv-hungary.hu](http://tuv-hungary.hu) | e-mail: [info@tuv-hungary.hu](mailto:info@tuv-hungary.hu)

CERTIFICAT

CERTIFICADO

СЕРТИФИКАТ

認證證書

CERTIFICATE

ZERTIFIKAT



## CERTIFICATE

### ÉMI-TÜV SÜD Kft.

HU – 2000 Szentendre, Dózsa György út 26.

hereby certifies that



### Electraplan Termelő Kft.

HU – 2030 Érd, Budafoki út 10.

HU – 8342 Óhid, Petőfi utca 10.

HU – 8454 Nyirád, Külterület 0124/11 hrsz

HU – 5530 Vésztő, Külterület 762/1.

has established and applies  
a Quality Management System for

**Manufacture and trade of  
electrical materials and metal structures,  
pressure equipment, storage tanks  
and industrial pipelines.**

An audit was performed, Report No. 732110892

Proof has been furnished that the requirements  
according to

### MSZ EN ISO 9001:2015

are fulfilled. The certificate is valid from **2024-06-03** until **2027-06-02**.

Certificate Registration No. **24 100 2202**



ÉMI-TÜV SÜD Kft.

Szentendre, 2024-05-28

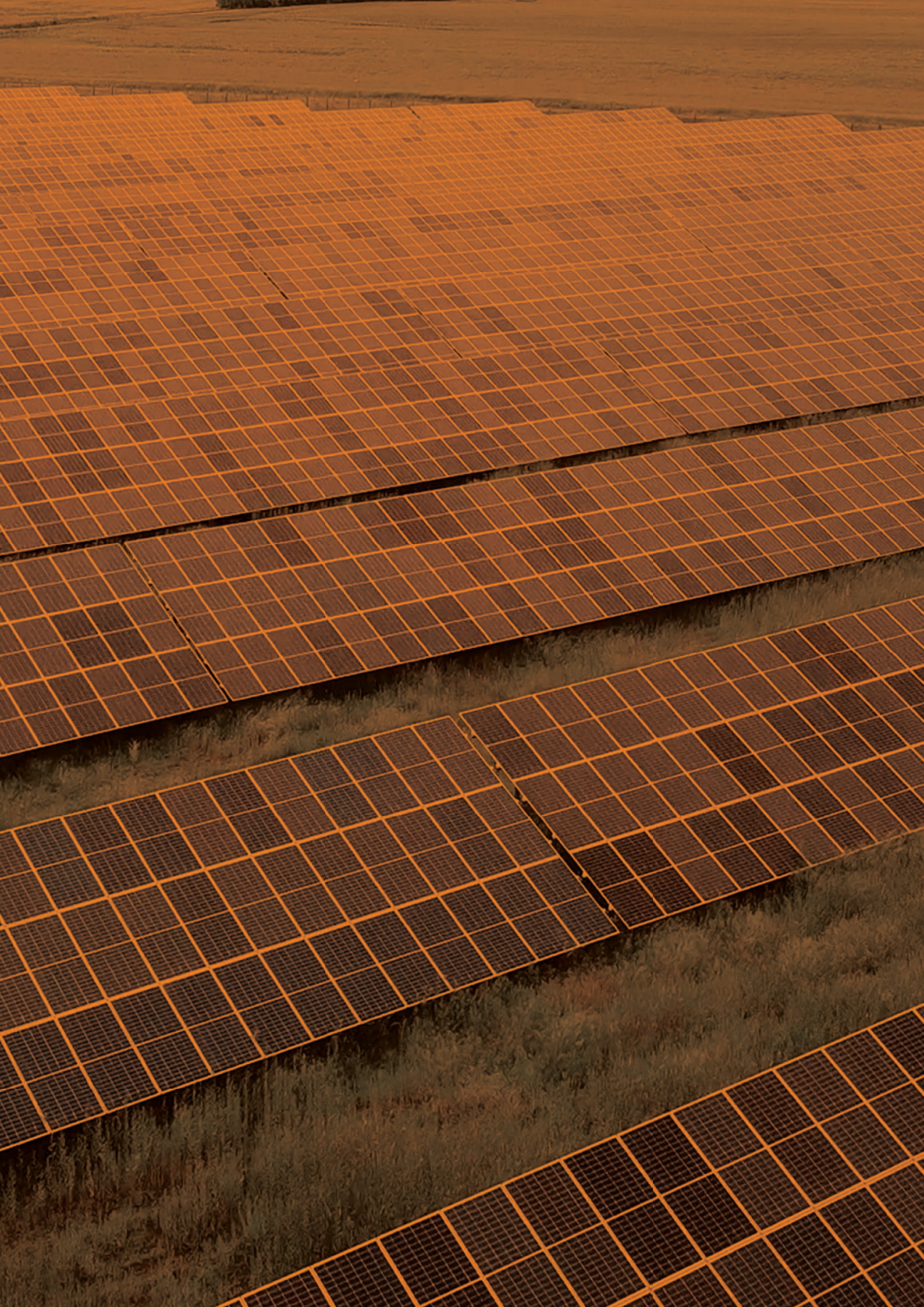


TUV®



[electraplan.eu](http://electraplan.eu)

We are committed to excellent quality,  
precision, and the professional  
execution of assignments.



# ELECTRAPLAN E-SOLAR

Visit our social sites and follow us!

 @electraplantermelokft.8838

 electraplantermelo

 Electraplan Kft. Fémmegmunkálás és fémszerkezet gyártás

 electraplankft

Electraplan-Termelő Kft.  
10 Budafoki street  
Érd, 2030  
Hungary  
Phone: +3623521300  
[www.electraplan.eu](http://www.electraplan.eu)

Eplan Solar Srl.  
Str. Pârâului no. 6,  
Sfântu Gheorghe 520033,  
Covasna County, Romania  
Phone: +40723916782  
[office@eplansolar.ro](mailto:office@eplansolar.ro)  
[www.eplansolar.ro](http://www.eplansolar.ro)



Your trading partner:

